



**Letitia Willemse**  
0832610746  
letitia@meridianrealty.co.za

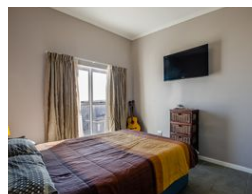
Contact **Virtual Office**

086 1732589

Loft Office 6  
The Woodmill Lifestyle Centre  
Vredenburg Road  
Devonvallei  
Stellenbosch  
7600



Web Ref RL14302



**R1,050,000**

 2  1

**Monthly Bond Repayment** R10,837.98

Calculated over 20 years at 11% with no deposit.

**Transfer Costs** R32,749.00 **Bond Costs** R25,220.00

These calculations are only a guide. Please ask your conveyancer for exact calculations.

**Monthly Levy** R1,055 **Monthly Rates** R380

### Good Price! – 2 Bedroom Flat, Protea Heights, Brackenfell

This charming 2-bedroom flat, nestled on the 2nd floor, boasts a breathtaking view of Table Mountain and a nearby play park. Its open-plan living area seamlessly connects to the kitchen, featuring a built-in stove and hob. Both bedrooms offer ample built-in cupboards and tiled flooring, while the bathroom includes space for a washing machine, a bath with a stand-up shower, basin, and toilet. Secure covered parking for one car ensures peace of mind.

Situated in the esteemed Blackstone complex, this flat is within walking distance to the nearby Haasendal Mall and has easy access to all main routes, including Stellenbosch, Bellville, Brackenfell, and Kuils River. With 24-hour manned security and a safe play area for children, this residence offers both comfort and convenience. This flat is at a giveaway price and is ideal for a...

### Features

<b>Pets Allowed</b>	Yes				
<b>Interior</b>		<b>Exterior</b>		<b>Sizes</b>	
Bedrooms	2	Carports / Parkings	1	Floor Size	53m²
Bathrooms	1	Security	Yes		
Kitchens	1	Pool	No		
Recep. Rooms	1	Views	False		
Furnished	No				