

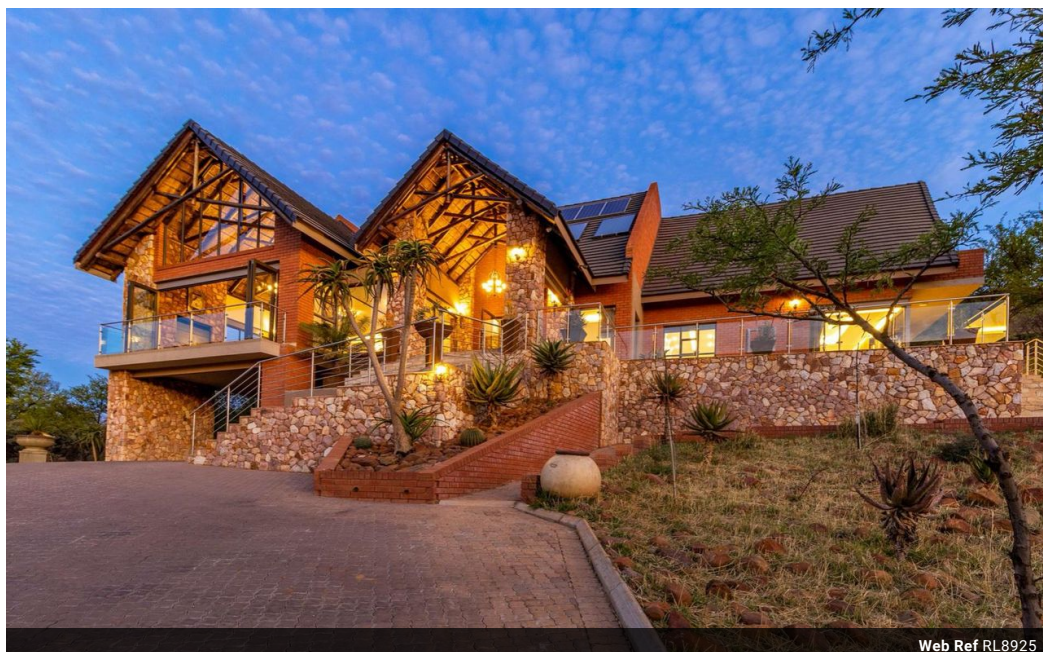


Leentjie Barnard
0790394873
leentjie@meridianrealty.co.za

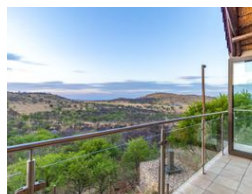
Contact **Virtual Office**

086 1732589

Loft Office 6
The Woodmill Lifestyle Centre
Vredenburg Road
Devonvallei
Stellenbosch
7600



Web Ref RL8925



R10,600,000

 3  4.5  6

Monthly Bond Repayment R107,614.27

Calculated over 20 years at 10.75% with no deposit.

Transfer Costs R1,052,827.00 **Bond Costs** R89,535.00

These calculations are only a guide. Please ask your conveyancer for exact calculations.

Monthly Levy R7,000 **Monthly Rates** R361

Exclusive 3-Bedroom with guest Cottage on a Game Farm Estate between Heidelberg & Vereeniging

Set on a stunning 5-hectare stand in the heart of the Midvaal area, between Heidelberg and Vereeniging, this luxurious property offers a unique opportunity to live within an exclusive Game Farm Estate. One of only 20 stands in the Estate, this home combines modern comfort with the beauty of nature, offering unrivaled views and access to diverse wildlife.

This spacious 661m² home features 3 generously sized bedrooms, all with en-suite bathrooms. The sunken lounge is a cozy retreat, and the open-plan design flows effortlessly from the dining room to the fully equipped kitchen, complete with a 6-burner Smeg gas stove, gas oven, and a 5-stage water purification system. The scullery, pantry, and separate laundry yard with trough provide ample space for all your household needs.

The entertainment area is nothing short of...

Features

Pets Allowed Yes

Interior

Bedrooms	3
Bathrooms	4.5
Kitchens	1
Recep. Rooms	3
Furnished	No

Exterior

Garages	6
Carports / Parkings	2
Security	Yes
Pool	Yes
Views	True

Sizes

Floor Size	661m ²
Land Size	5Ha

