

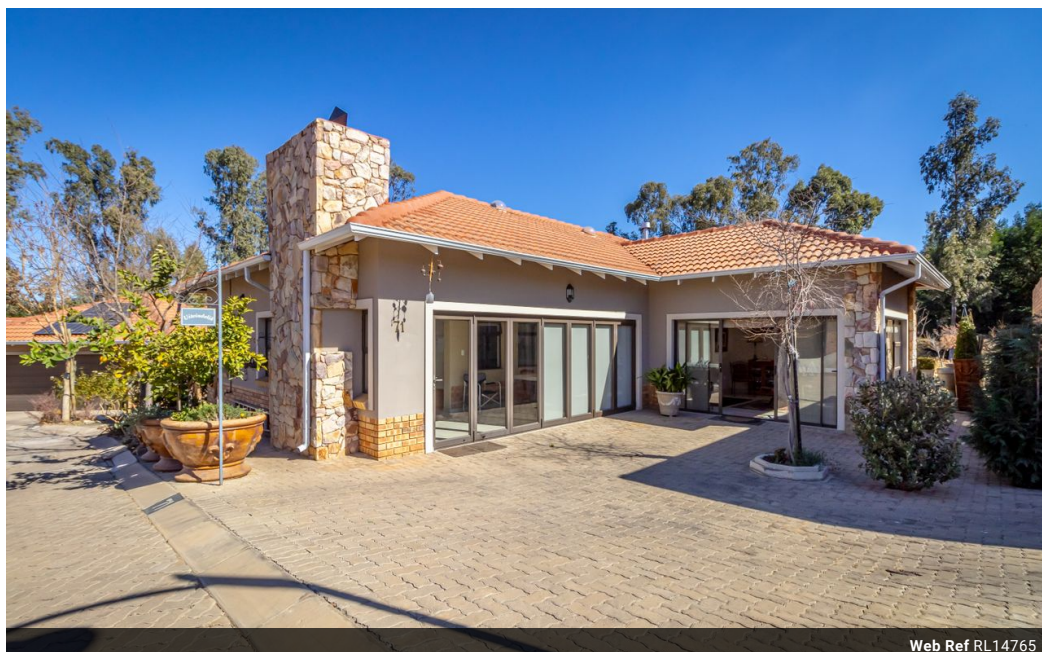


Leentjie Barnard
0790394873
leentjie@meridianrealty.co.za

Contact **Virtual Office**

086 1732589

Loft Office 6
The Woodmill Lifestyle Centre
Vredenburg Road
Devonvallei
Stellenbosch
7600



Web Ref RL14765



R2,995,000

2 3 1

Monthly Bond Repayment R30,406.11

Calculated over 20 years at 10.75% with no deposit.

Transfer Costs R159,661.00 **Bond Costs** R42,185.00

These calculations are only a guide. Please ask your conveyancer for exact calculations.

Monthly Levy R2,572 **Monthly Rates** R1,750

Immaculate & Modern home for a well deserved Retirement.

Discover a perfect blend of comfort, style, and living convenience in this perfectly planned architectural masterpiece by Hennie van der Merwe. Located in the serene Riversands Retirement Estate in Heidelberg, Jordaan Park, this north-facing townhouse, built in 2018, boasts top-end finishes and spacious living areas.

Property features:

Living space: 209m² of beautifully designed living spaces set in an estate with numerous open areas.

Erf size: 450m² (one of only seven properties with its own stand at the back)

Entrance: The estate features a landscaped garden that exudes tranquillity and relaxation.

Amenities: The retirement estate includes a restaurant, jukskei, and a frail care unit.

Interior highlights:

Enclosed patio: Sun-drenched and inviting.

Open plan lounge and dining room: Spacious area fitted with a gas...

Features

Pets Allowed Yes

Interior

| | |
|--------------|----|
| Bedrooms | 2 |
| Bathrooms | 3 |
| Kitchens | 1 |
| Recep. Rooms | 3 |
| Studies | 1 |
| Furnished | No |

Exterior

| | |
|---------------------|------|
| Garages | 1 |
| Carports / Parkings | 1 |
| Security | Yes |
| Pool | No |
| Views | True |

Sizes

| | |
|------------|-------------------|
| Floor Size | 209m ² |
| Land Size | 450m ² |