



Tamaryn Strydom  
0824459989  
tamaryn@meridianrealty.co.za

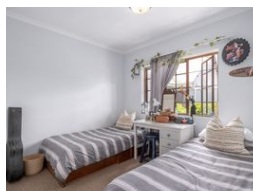
Contact **Virtual Office**

086 1732589

Loft Office 6  
The Woodmill Lifestyle Centre  
Vredenburg Road  
Devonvallei  
Stellenbosch  
7600



Web Ref RL15574



R1,150,000

2 1

**Monthly Bond Repayment** R11,870.17

Calculated over 20 years at 11% with no deposit.

**Transfer Costs** R32,749.00 **Bond Costs** R25,220.00

These calculations are only a guide. Please ask your conveyancer for exact calculations.

**Monthly Levy** R950 **Special Levy** R600

## Two-Bedroom Lock-Up-and-Go Townhouse in Sought-After Berryhill Mews

Located in the heart of Hilton, this delightful two-bedroom, one-bathroom townhouse in the popular Berryhill Mews is the ultimate in convenience and easy living.

Key Features:

- Prime Location: A short stroll to the Quarry Shopping Centre and centrally positioned in Hilton.
- Move-In Ready: Immaculate condition – no work required!
- Thoughtful Layout: A seamless flow designed for comfortable everyday living.
- Entertainment Ready: Undercover courtyard perfect for hosting guests.
- Complex Perks: Enjoy the sparkling pool and the beautifully maintained communal garden.
- Safe and Secure: Peace of mind in a secure complex.

Ideal for parents with children at Hilton College or St Anne's, this home also makes for a smart investment or a convenient weekend retreat.

This gem won't stay on the market for long – hurry and book your...

## Features

### Interior

Bedrooms	2
Bathrooms	1
Kitchens	1
Recep. Rooms	2
Furnished	No

### Exterior

Carparks / Parkings	1
Security	Yes
Pool	Yes
Views	False

### Sizes

Floor Size	82m²
------------	------