



Tamaryn Strydom
0824459989
tamaryn@meridianrealty.co.za

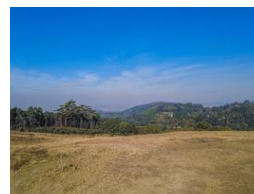
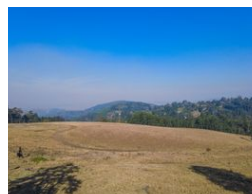
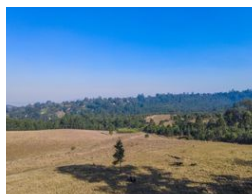
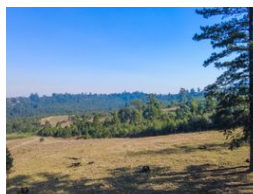
Contact **Virtual Office**

086 1732589

Loft Office 6
The Woodmill Lifestyle Centre
Vredenburg Road
Devonvallei
Stellenbosch
7600



Web Ref RL14702



R3,950,000

Monthly Bond Repayment R40,101.54

Calculated over 20 years at 10.75% with no deposit.

Transfer Costs R275,550.00 **Bond Costs** R51,610.00

These calculations are only a guide. Please ask your conveyancer for exact calculations.

Land with panoramic views for development.

This property offers an amazing opportunity if you are looking for development prospects or to build your perfect large-scale home or to farm and harvest the land. The land has existing eucalyptus grandis trees and plenty of scope to provide space, views, and landscape for either the perfect home or a medium to large-sized development of free-standing homes. The land includes a water use license and is zoned for agriculture.

Two pieces are available:

Portion 1 Size = 82 hectares
Portion 2 Size = 45 hectares

Features