



Thobe Msezane
082 696 2487
thobe@meridianrealty.co.za

Contact **Virtual Office**

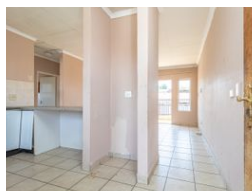
086 1732589

Loft Office 6
The Woodmill Lifestyle Centre
Vredenburg Road
Devonvallei
Stellenbosch
7600



SOLE MANDATE

Web Ref RL15484



R655,000

2 Bedrooms 1 Bathroom 1 Garage

Monthly Bond Repayment R6,649.75

Calculated over 20 years at 10.75% with no deposit.

Transfer Costs R23,730.00 **Bond Costs** R17,680.00

These calculations are only a guide. Please ask your conveyancer for exact calculations.

Monthly Levy R1,062 **Monthly Rates** R550

Contemporary Two Bedrooms Townhouse For Sale

When you are desperately looking for the property for your family, look no further because this two-bedroom townhouse is already available even for the occupational rent. Located in the heart of Birchleigh Boulevard and surrounded by all amenities required. This first-floor unit offers the perfect blend of elegance and comfort. It is ideal for investment purposes, the young professionals seeking for a peace of mind in the modern living spaces and the single individuals.

SPECIAL PROPERTY HIGHLIGHTS:

- * Open plan kitchen with a stove and the space for the fridge.
- * Spacious lounge perfectly for relaxation and leads you to the well sized balcony, which is suitable for entertainment and peaceful views of the area and the surroundings.
- * Two bedrooms with BIC and very easy to maintain tiled flooring.
- * One family sized bathroom...

Features

Interior

Bedrooms	2
Bathrooms	1
Kitchens	1
Recep. Rooms	1
Furnished	No

Exterior

Garages	1
Carports / Parkings	1
Security	Yes
Pool	No
Views	False

Sizes

Floor Size	88m²
Land Size	2,672m²