

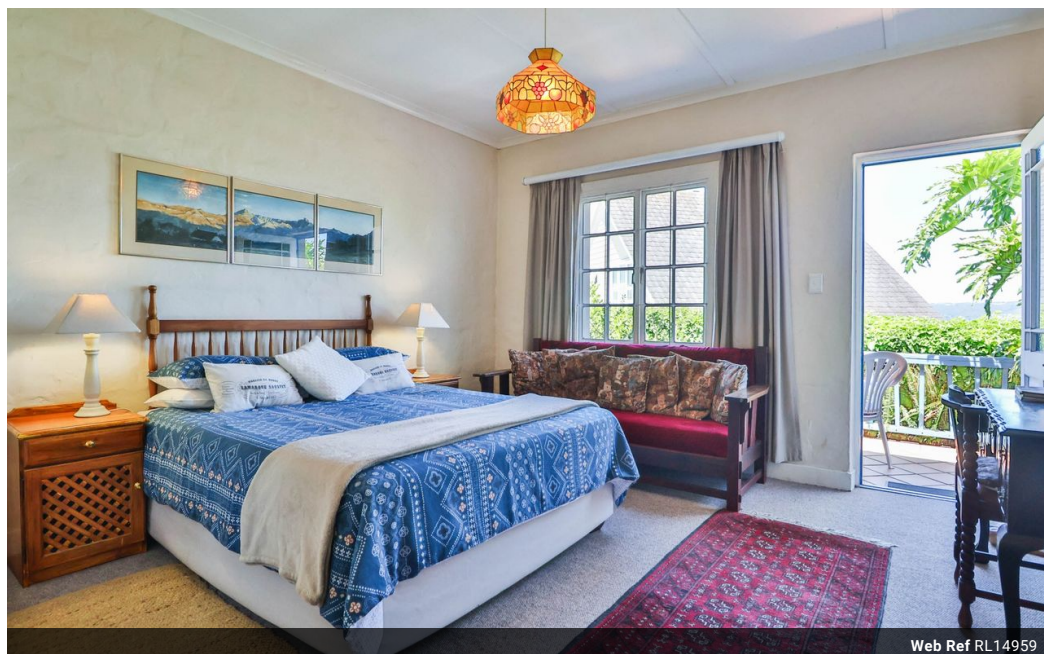


Alan Bell
 083 269 7796
 alan@meridianrealty.co.za

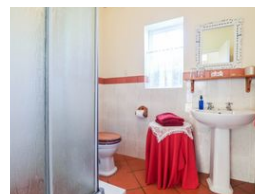
Contact **Virtual Office**

086 1732589

Loft Office 6
 The Woodmill Lifestyle Centre
 Vredenburg Road
 Devonvallei
 Stellenbosch
 7600



Web Ref RL14959



R5,500,000

 8  7

Monthly Bond Repayment R56,770.36

Calculated over 20 years at 11% with no deposit.

Transfer Costs R462,807.00 **Bond Costs** R65,785.00

These calculations are only a guide. Please ask your conveyancer for exact calculations.

Monthly Rates R2,979

Delightful charming Historical Guesthouse within walking distance of central Knysna

This neat home, currently operating as a delightful guesthouse, is full of historic (not heritage) charm and superbly situated with spectacular views over the remarkably biodiverse Knysna Estuary (fondly known by locals as the lagoon) and through the famed Knysna Heads.

The property consists of a three-bedroom homestead, a three-bedroom annex, two cottages (with space for kitchenettes), and an outside room, all with en-suite bathrooms. It is conveniently located within walking distance of Knysna town centre, Knysna's waterfront tourist mecca, and good primary and secondary schools.

The homestead can be configured in multiple ways to suit a family and/or guesthouse, such as:

A three-bedroom homestead plus five income-producing rooms, or

A home with two separate cottages (with space for kitchenettes for extended family) plus...

Features

Pets Allowed	Yes				
Interior		Exterior		Sizes	
Bedrooms	8	Carports / Parkings	6	Floor Size	550m ²
Bathrooms	7	Security	No	Land Size	1,850m ²
Kitchens	1	Dom. Accom.	1		
Recep. Rooms	2	Pool	Yes		
Studies	1	Views	True		
Furnished	No				