



**Marelize Bruwer**  
0825789161  
marelize@meridianrealty.co.za

Contact **Virtual Office**

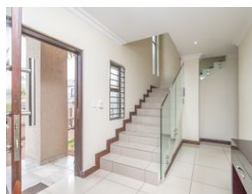
086 1732589

Loft Office 6  
The Woodmill Lifestyle Centre  
Vredenburg Road  
Devonvallei  
Stellenbosch  
7600



SOLE MANDATE

Web Ref RL15893



**R2,798,000**

3 3.5 2

**Monthly Bond Repayment** R28,406.11

Calculated over 20 years at 10.75% with no deposit.

**Transfer Costs** R141,727.00 **Bond Costs** R40,300.00

These calculations are only a guide. Please ask your conveyancer for exact calculations.

**Monthly Levy** R1,915 **Monthly Rates** R1,890

## Designed for Safety and Convenience

This double-storey home, in the popular Homes Haven, is a blend of luxury, comfort and thoughtful design.

Upstairs unfold with three spacious bedrooms, catering for convenience and a family's needs (enough dedicated space for homework and creativity), each with its own bathroom (2 en-suite), and lots of linen cupboards. The downstairs living space, kitchen and separate scullery, also includes a braai room, opening through stacker doors to a welcoming pool area, with lapa.

Bonus: spacious outside 4th bedroom/domestic accommodation/teen pad, with own entrance. The aluminium windows ensure durability and low maintenance. In front of the double automated garages, one can park at least 2 more vehicles, behind the gate.

Villa Conesa, near Featherbrooke Estate, offers a secure family friendly lifestyle near good schools,...

## Features

**Pets Allowed** Yes

### Interior

Bedrooms	3
Bathrooms	3.5
Kitchens	1
Recep. Rooms	2
Furnished	No

### Exterior

Garages	2
Carports / Parkings	2
Security	Yes
Dom. Accom.	1
Pool	Yes
Views	False

### Sizes

Floor Size	270m <sup>2</sup>
Land Size	462m <sup>2</sup>