



Marelize Bruwer
0825789161
marelize@meridianrealty.co.za

Contact **Virtual Office**

086 1732589

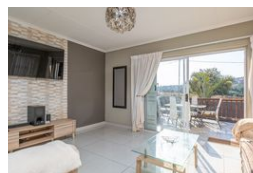
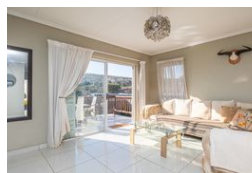
Loft Office 6
The Woodmill Lifestyle Centre
Vredenburg Road
Devonvallei
Stellenbosch
7600

NEW



SOLE MANDATE

Web Ref RL16365



R1,450,000

 2
  1
  1

Monthly Bond Repayment R14,720.82

Calculated over 20 years at 10.75% with no deposit.

Transfer Costs R44,285.00 **Bond Costs** R28,990.00

These calculations are only a guide. Please ask your conveyancer for exact calculations.

Monthly Levy R2,256 **Monthly Rates** R920

Pristine Lock-up-and-Go

Immaculate 2 bedroom single storey townhouse, on the doorstep of Curro School in Rangeview.

Enter your new home directly from the extra length garage (with space for your top-loader washing machine). More parking, on the side of the property, offers space for your double cab, as well as an extra vehicle/trailer. The garden is fully enclosed making it safe for small pets, and offers a private boma, as well as built-in braai. If you are looking for a modern home, enough parking for 3 vehicles, and love outdoor entertainment, this place is definitely for you.

This lock-up-and-go is perfect for people who are starting out, scaling down or for an investment buyer. Do not miss out on this excellently valued home.

Features

Pets Allowed Yes

Interior

Bedrooms	2
Bathrooms	1
Kitchens	1
Recep. Rooms	2
Furnished	No

Exterior

Garages	1
Carports / Parkings	2
Security	Yes
Pool	No
Views	False

Sizes

Floor Size	100m ²
Land Size	250m ²