



Soma Holloway-Carther
076 191 0363
soma@meridianrealty.co.za

Contact **Virtual Office**

086 1732589

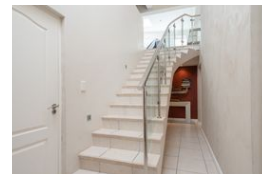
Loft Office 6
The Woodmill Lifestyle Centre
Vredenburg Road
Devonvallei
Stellenbosch
7600

NEW



SOLE MANDATE

Web Ref RL16354



R7,500,000

🛏 4 🚿 5 🚗 2

Monthly Bond Repayment R76,142.17

Calculated over 20 years at 10.75% with no deposit.

Transfer Costs R694,228.00 **Bond Costs** R75,285.00

These calculations are only a guide. Please ask your conveyancer for exact calculations.

Monthly Levy R1,100 **Monthly Rates** R2,000

Flexible Coastal Living Just Steps from the Beach in Calypso Bay

*Exclusive Sole Mandate

This beautifully designed home is ideally situated in the sought-after Calypso Beach estate, directly opposite a walkway that leads to the pristine beach. Enjoy the ultimate coastal lifestyle with the convenience of beachside living—without the beachfront price tag.

Cleverly laid out to offer flexibility, this home can be enjoyed as a spacious 4-bedroom family residence or easily adapted into a home with a separate flatlet—perfect for extended family or as an income-generating rental unit.

As you enter, you're welcomed by an elegant stairway that sets the tone for the rest of the home. Upstairs, a light-filled open-plan living area awaits, comprising a sunny lounge, dining space, and a modern kitchen complete with a separate scullery. The lounge opens onto a balcony with partial ocean views over the...

Features

Pets Allowed Yes

Interior

Bedrooms	4
Bathrooms	5
Kitchens	1
Recep. Rooms	4
Furnished	No

Exterior

Garages	2
Carports / Parkings	2
Security	No
Pool	No
Views	False

Sizes

Land Size	343m²
-----------	-------

