

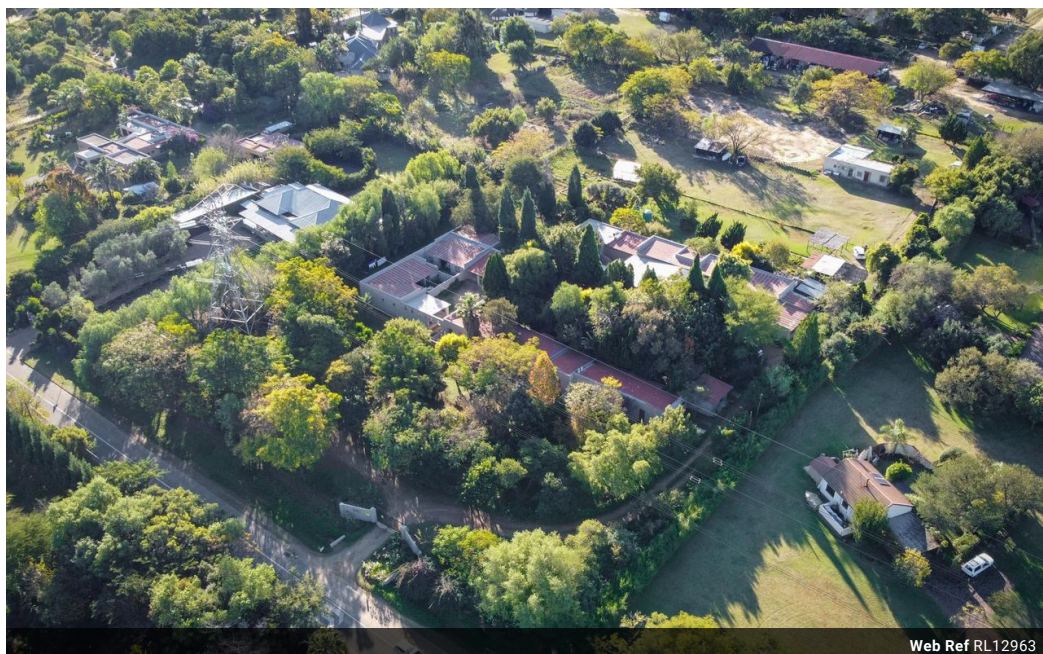


**Kristy Strydom**  
083 541 2220  
kristy@meridianrealty.co.za

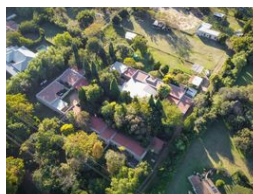
Contact **Virtual Office**

086 1732589

Loft Office 6  
The Woodmill Lifestyle Centre  
Vredenburg Road  
Devonvallei  
Stellenbosch  
7600



Web Ref RL12963



**R6,300,000**



3



2.5

**Monthly Bond Repayment** R63,959.42

Calculated over 20 years at 10.75% with no deposit.

**Transfer Costs** R556,766.00 **Bond Costs** R70,535.00

These calculations are only a guide. Please ask your conveyancer for exact calculations.

**Monthly Levy** R3,850 **Monthly Rates** R4,050

## Equestrian Utopia - endless opportunities

Majestic property – 1 4327 ha nestled in the heartlands of Equestrian euphoria; this is simply a horse lover's dream!! This property boasts a sizeable main house, accommodating 3 bedrooms, 2.5 bathrooms, reception rooms, study, outside lapa and indigenous garden. Furthermore - 3 staff cottages, numerous storerooms and a stable yard. What a serene one-with-nature type lifestyle.

Vast land, offering endless opportunities for the discerning developer to maximise the potential of this amazing plot that is ideally situated next door to the Gauteng Horse Association. Plentiful space for horse stalls, arena, & paddocks. Bridal paths for safe outrides and riding enjoyment.

Borehole facilities, JOJO tanks, staff accommodation and electric fence security to add to the enticement of this GEM.

For all you nature lovers, cowboys/gals,...

## Features

**Pets Allowed** Yes

### Interior

Bedrooms	3
Bathrooms	2.5
Kitchens	1
Recep. Rooms	3
Studies	1
Furnished	No

### Exterior

Carports / Parkings	9
Security	Yes
Dom. Accom.	1
Pool	No
Views	False

### Sizes

Land Size	14,327m <sup>2</sup>
-----------	----------------------

