



**Judy Joubert**  
0828736988  
judy@meridianrealty.co.za



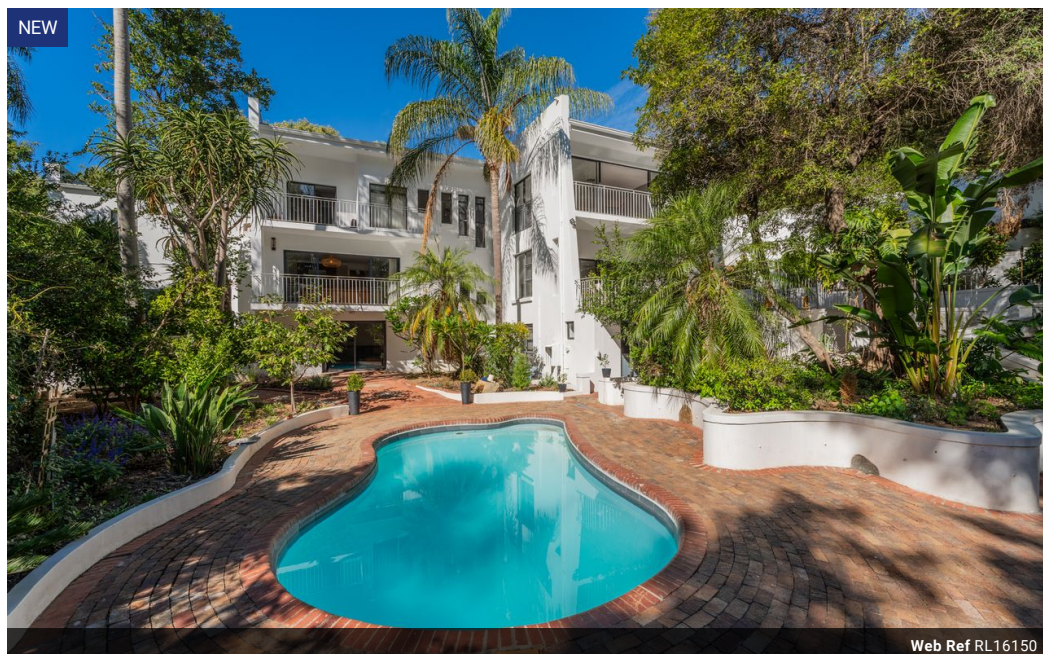
**Simone de Wet**  
0727265521

simone.dewet@meridianrealty.co.za

Contact **Virtual Office**

086 1732589

Loft Office 6  
The Woodmill Lifestyle Centre  
Vredenburg Road  
Devonvallei  
Stellenbosch  
7600



Web Ref RL16150



**R11,995,000**

5 5 2

**Monthly Bond Repayment** R123,811.00

Calculated over 20 years at 11% with no deposit.

**Transfer Costs** R1,211,739.00 **Bond Costs** R94,285.00

These calculations are only a guide. Please ask your conveyancer for exact calculations.

**Monthly Rates** R3,000

## A Tranquil Retreat Surrounded by Nature

Set alongside a peaceful river and surrounded by lush greenery, this spacious multi-level home is the perfect escape for those who love nature, privacy, and comfort. Whether you're looking for a family home, dual-living potential, or income-generating opportunities, this property offers it all.

The top floor features three spacious bedrooms, all with en-suite bathrooms. The main suite is a generous space with air conditioning, a private balcony overlooking the trees, and a luxurious en-suite bathroom with a walk-in shower, free-standing bath, double basins, and separate toilet. A dressing area and ample built-in cupboards complete the space. The second bedroom also enjoys a private balcony, making it ideal for guests or older children.

The middle level forms the heart of the home. A cozy open-plan lounge with a fireplace...

## Features

**Pets Allowed** Yes

### Interior

Bedrooms	5
Bathrooms	5
Kitchens	1
Recep. Rooms	4
Furnished	No

### Exterior

Garages	2
Carports / Parkings	3
Security	Yes
Pool	Yes
Views	False

### Sizes

Floor Size	541m <sup>2</sup>
Land Size	1,066m <sup>2</sup>

