



Judy Joubert
0828736988
judy@meridianrealty.co.za



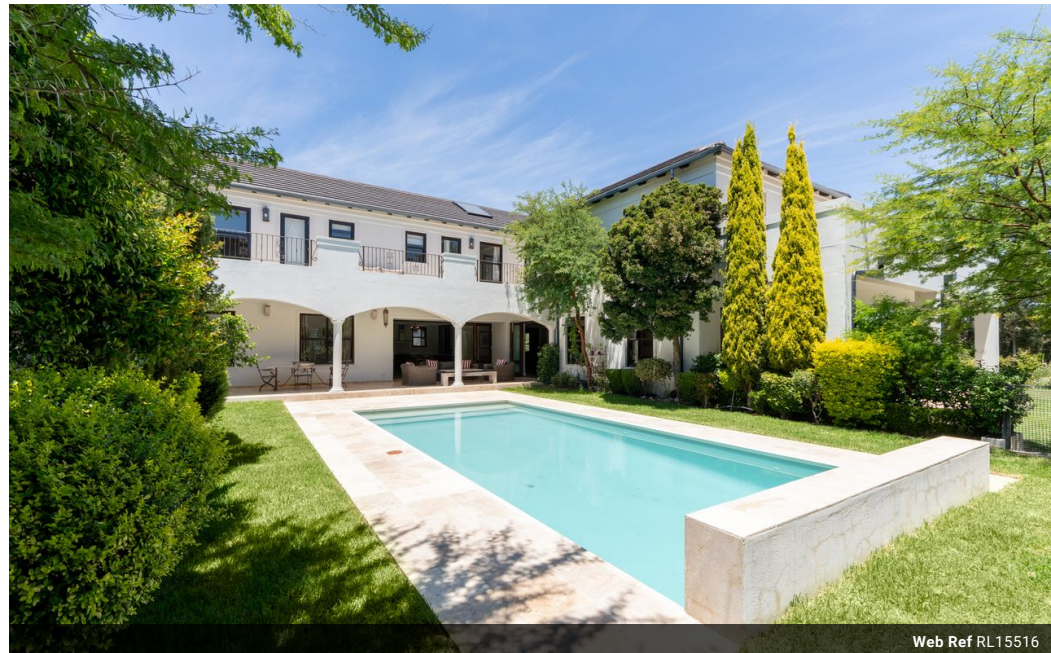
Simone de Wet
0727265521

simone.dewet@meridianrealty.co.za

Contact **Virtual Office**

086 1732589

Loft Office 6
The Woodmill Lifestyle Centre
Vredenburg Road
Devonvallei
Stellenbosch
7600



Web Ref RL15516



R42,500,000

 7  6.5  3

Monthly Bond Repayment R431,472.31

Calculated over 20 years at 10.75% with no deposit.

Transfer Costs R5,197,371.00 **Bond Costs** R132,285.00

These calculations are only a guide. Please ask your conveyancer for exact calculations.

Monthly Levy R5,210

The Great Dame of Val de Vie Estate.

Exclusive Joint Mandate

Step into a home where classic elegance meets modern comfort. With its spacious layout, high ceilings, and timeless finishes, this home offers the perfect blend of luxury and practicality, ideal for both relaxed family living and stylish entertaining.

As you enter through the grand wooden front door, you're welcomed by a striking foyer with a feature chandelier. The warm wooden floors guide you into the heart of the home, where the open-plan layout creates a seamless flow between living spaces.

At the heart of it all is the farmhouse-style kitchen, overlooking the covered pool patio. It's the perfect space for family gatherings or hosting friends, offering a warm and welcoming vibe. Next to the kitchen, you'll find a separate scullery and a large pantry, while the laundry room, just off the scullery,...

Features

Pets Allowed Yes

Interior

Bedrooms	7
Bathrooms	6.5
Kitchens	1.5
Recep. Rooms	4
Studies	1
Furnished	No

Exterior

Garages	3
Carports / Parkings	6
Security	No
Dom. Accom.	1
Pool	Yes
Views	True

Sizes

Floor Size	900m ²
Land Size	1,390m ²

