



**Sally Searle**  
0828288929  
sally@meridianrealty.co.za



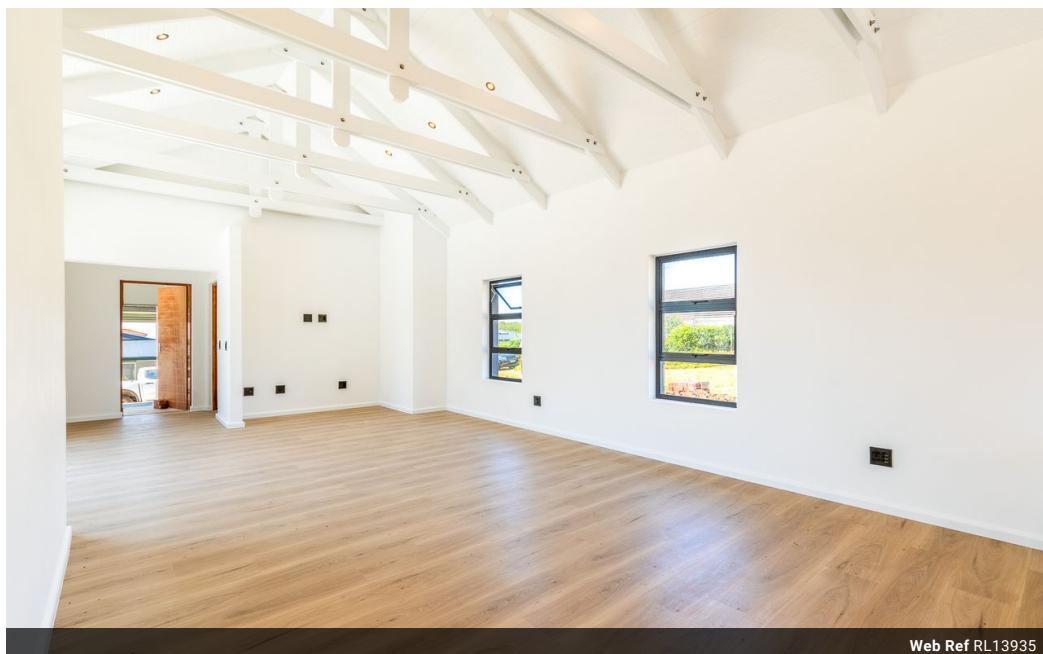
**Simon Revington**  
0722044486

simon@meridianrealty.co.za

Contact **Virtual Office**

086 1732589

Loft Office 6  
The Woodmill Lifestyle Centre  
Vredenburg Road  
Devonvallei  
Stellenbosch  
7600



Web Ref RL13935



**R4,890,000**

3 2.5 2

**Monthly Bond Repayment** R50,474.01

Calculated over 20 years at 11% with no deposit.

**Transfer Costs** R390,245.00 **Bond Costs** R61,035.00

These calculations are only a guide. Please ask your conveyancer for exact calculations.

**Monthly Levy** R1,222 **Monthly Rates** R225

**Brilliant starter home or retire to the sea and look at the view...**

Well designed home in a small secure development which is centrally situated in Plettenberg Bay. Tucked away in a quiet corner with no roads on any sides of the property. Nice and easy .....this is a brand new build on an almost flat stand which is fully walled. Drive straight into the double garage and walk into the house. The spacious living areas have plenty of big windows to capture the sunny northern aspect, the sea and mountain views. With three bedrooms ( main en-suite) and a generous outdoor living area with a built in braai and swimming pool this one is definitely worth considering. A well thought out open plan kitchen with plenty of cupboard space and a neat scullery tucked away at the back. Call us for a viewing.....

## Features

**Pets Allowed** Yes

### Interior

Bedrooms	3
Bathrooms	2.5
Kitchens	1
Recep. Rooms	2
Furnished	No

### Exterior

Garages	2
Security	Yes
Pool	Yes
Views	True

### Sizes

Floor Size	224m <sup>2</sup>
Land Size	563m <sup>2</sup>