



Sally Searle
0828288929
sally@meridianrealty.co.za



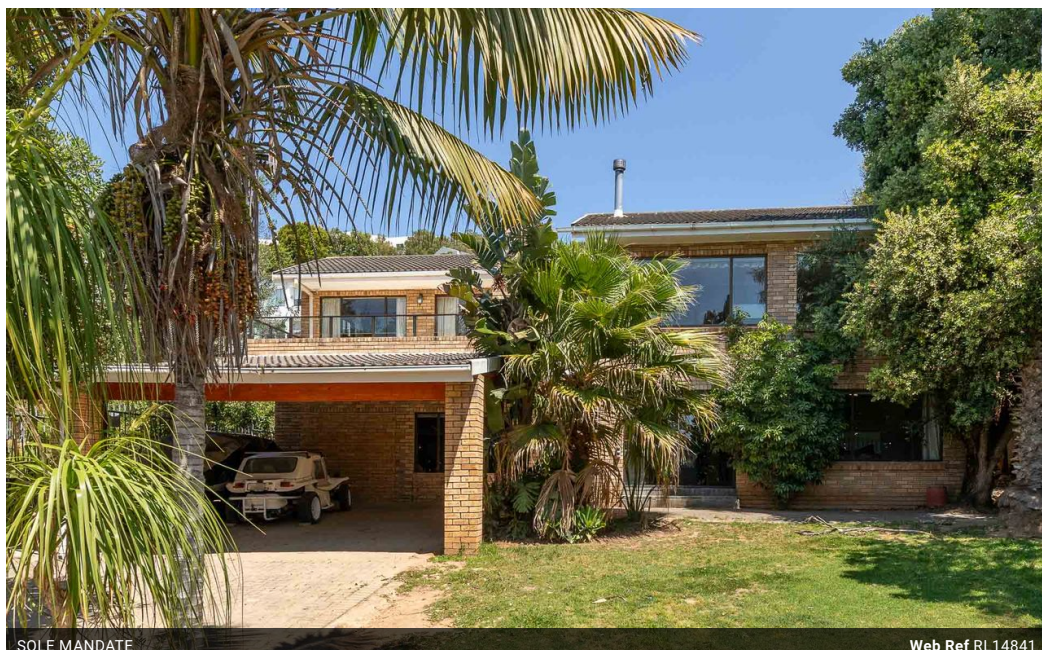
Simon Revington
0722044486

simon@meridianrealty.co.za

Contact **Virtual Office**

086 1732589

Loft Office 6
The Woodmill Lifestyle Centre
Vredenburg Road
Devonvallei
Stellenbosch
7600




SOLE MANDATE

Web Ref RL14841



R3,450,000

 4  5

Monthly Bond Repayment R35,025.40

Calculated over 20 years at 10.75% with no deposit.

Transfer Costs R216,214.00 **Bond Costs** R47,840.00

These calculations are only a guide. Please ask your conveyancer for exact calculations.

Spacious family home close to Lookout Beach and the lagoon.

Sole mandate

Are you looking for a spacious home for your family in a convenient location close to all of Plett's attractions? Then this could be the start of your dream life in Plettenberg Bay. Situated at the top of the Poortjies, the lagoon and Lookout Beach are a short walk or drive away, as is Market Square and the Checkers Shopping Centre. Facing north-east, the home is perfectly positioned for mountain, sea, and lagoon views, with the prevailing south-westerly wind at the back of the house.

Comprising 4 bedrooms and 3 full-size bathrooms, there is space for everyone. Three bedrooms and two bathrooms are downstairs, and the main bedroom with en-suite and guest loo is upstairs. The downstairs double garage has been converted into a rumpus/games room, with a double carport now in front. Upstairs, the open plan...

Features

Interior

Bedrooms	4
Bathrooms	5
Kitchens	1
Recep. Rooms	2
Furnished	No

Exterior

Carports / Parkings	2
Security	Yes
Pool	No
Views	False

Sizes

Floor Size	290m ²
Land Size	644m ²