



Sally Searle
0828288929
sally@meridianrealty.co.za



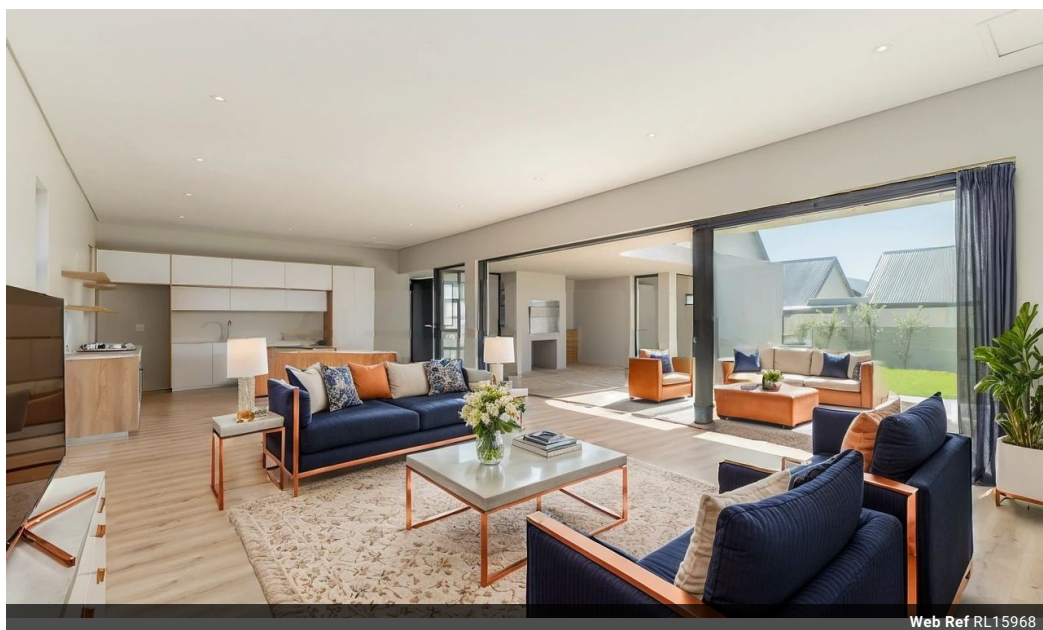
Simon Revington
0722044486

simon@meridianrealty.co.za

Contact Virtual Office

086 1732589

Loft Office 6
The Woodmill Lifestyle Centre
Vredenburg Road
Devonvallei
Stellenbosch
7600



Web Ref RL15968



R5,990,000

 4  4.5  2

Monthly Bond Repayment R60,812.21

Calculated over 20 years at 10.75% with no deposit.

Transfer Costs R516,707.00 **Bond Costs** R65,785.00

These calculations are only a guide. Please ask your conveyancer for exact calculations.

Monthly Levy R2,942 **Monthly Rates** R1,100

BRAND NEW LUXURY HOME in SECURE ESTATE

BRAND NEW LUXURY HOME in SECURE ESTATE

JOINT MANDATE

This property sale will attract VAT, not transfer duty, at a sale price of R6 813 750 incl. VAT

Own a newly built, modern, luxury home without the hassle of building. This stylish and private home has all the features expected for contemporary, luxury living: 4 bedrooms with en-suite bathrooms, expansive and interleading indoor and outdoor living areas, gas stove, stone counter tops, high end fittings and sanitary ware, large double automated garage, separate scullery and laundry.

The home basks in the northern light and warmth that Baron's View is famous for. Also protected from any wind, the lifestyle is private, calm and secure. Provision has been made for a swimming pool, should the new owner desire one, at an additional cost.

Join the existing Baron's View...

Features

Pets Allowed Yes

Interior

Bedrooms	4
Bathrooms	4.5
Kitchens	1
Recep. Rooms	2
Furnished	No

Exterior

Garages	2
Carports / Parkings	2
Security	Yes
Pool	No
Views	False

Sizes

Floor Size	300m ²
Land Size	806m ²

