

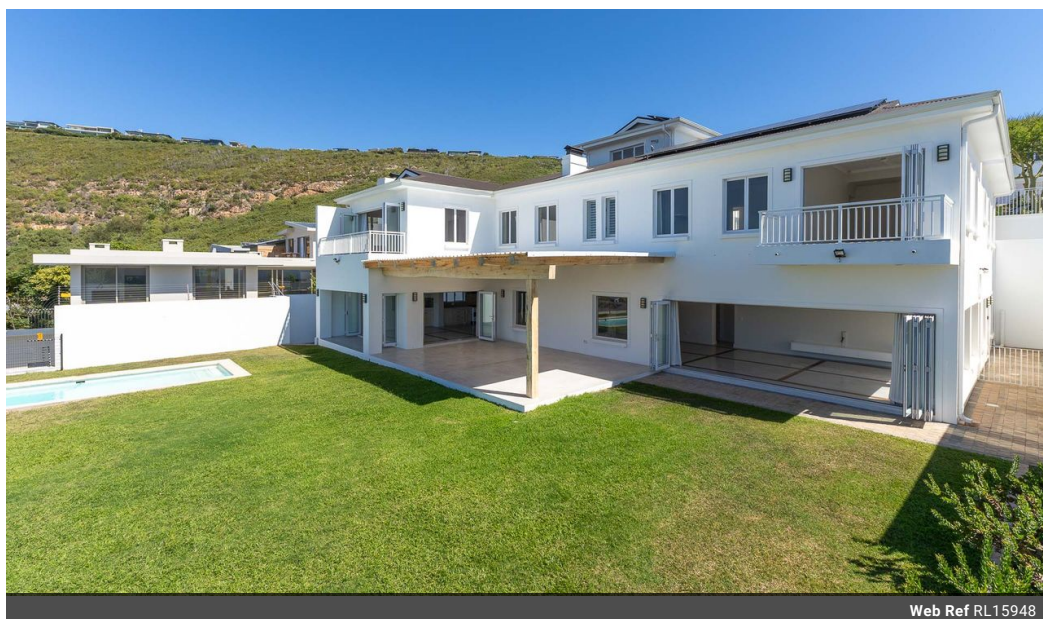


John Van Coller
0836269994
johnvancoller@meridianrealty.co.za

Contact **Virtual Office**

086 1732589

Loft Office 6
The Woodmill Lifestyle Centre
Vredenburg Road
Devonvallei
Stellenbosch
7600



Web Ref RL15948



R13,850,000

🛏 6 🛁 6 🚗 3

Monthly Bond Repayment R142,958.09

Calculated over 20 years at 11% with no deposit.

Transfer Costs R1,437,514.00 **Bond Costs** R103,785.00

These calculations are only a guide. Please ask your conveyancer for exact calculations.

Monthly Rates R2,500

Spacious Home with Sea Views in Whale Rock, Plettenberg Bay

Large family home with beautiful views of Robberg Peninsula, Tsitsikamma Mountains and sea in Whale Rock in Plettenberg Bay. This 6 bedroom, 6 bathroom home is ideal for a large family or working from home.

The house is on two levels with bedrooms on the upper level and living areas and office space on the lower level. The open plan living areas and kitchen flow out onto a covered patio and lawn with pool. All the bedrooms are en suite and the main bedroom has a walk in closet. The whole house has underfloor heating. The living areas have lovely screeded floors, bedrooms are vinyl and carpet. The house has solar for any power interruptions.

Thought and care has been taken in the design and finishes of this beautiful home. It is great for entertaining guests with enclosed braai area covered patio and pool. Three garages...

Features

Pets Allowed Yes

Interior

Bedrooms	6
Bathrooms	6
Kitchens	1
Recep. Rooms	2
Studies	1
Furnished	No

Exterior

Garages	3
Carports / Parkings	4
Security	Yes
Pool	Yes
Views	True

Sizes

Floor Size	598m ²
Land Size	1,070m ²

