

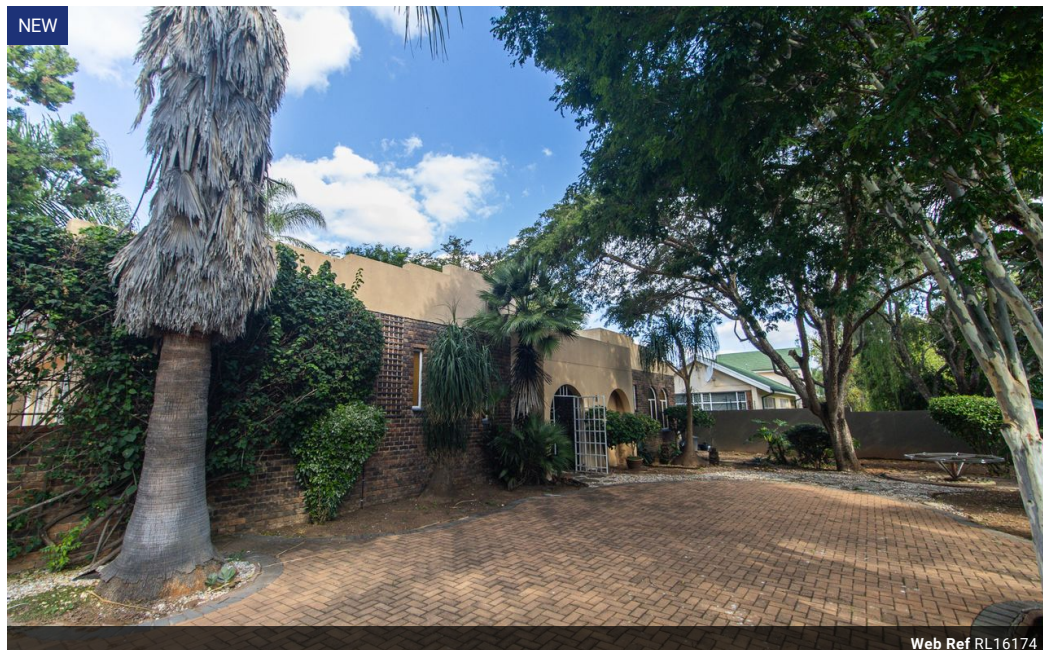


Lynn-Marie Combrink
065 944 8581
lynnmarie@meridianrealty.co.za

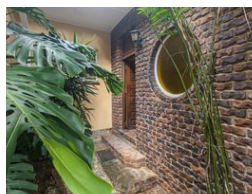
Contact **Virtual Office**

086 1732589

Loft Office 6
The Woodmill Lifestyle Centre
Vredenburg Road
Devonvallei
Stellenbosch
7600



Web Ref RL16174



R2,775,000

5 3 2

Monthly Bond Repayment R28,643.23

Calculated over 20 years at 11% with no deposit.

Transfer Costs R139,887.00 **Bond Costs** R40,300.00

These calculations are only a guide. Please ask your conveyancer for exact calculations.

Monthly Rates R2,200

Family home plus potential flatlet available for sale!

Nestled in a quiet street in the sought-after suburb of Bendor, Polokwane, this spacious five-bedroom, three-bathroom home offers comfort, convenience, and exceptional potential. The layout allows for flexible living, with the opportunity to divide the property into a three-bedroom main house and a two-bedroom flatlet—ideal for extended family or rental income, pending the necessary plan updates. Outside, a sparkling swimming pool, lapa, and built-in deck create the perfect setting for entertaining.

The exterior is fully paved for easy maintenance, and the property includes two single garages as well as two carports for ample parking. With its versatile design, well-kept features, and prime location close to schools, shopping centres, and amenities, this home is a rare find in Bendor. Don't miss out on turning this...

Features

Pets Allowed	Yes				
Interior		Exterior		Sizes	
Bedrooms	5	Garages	2	Floor Size	300m ²
Bathrooms	3	Carports / Parkings	4	Land Size	1,504m ²
Kitchens	1	Security	Yes		
Recep. Rooms	3	Pool	Yes		
Studies	1	Views	False		
Furnished	No				