

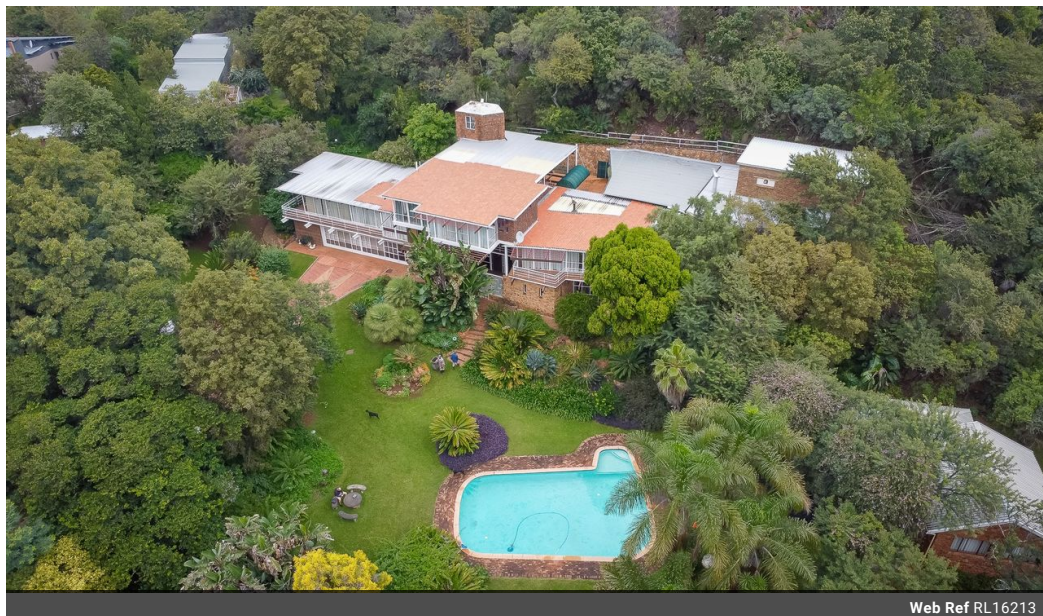


Hester van der Westhuizen
 0827746428
 hester@meridianrealty.co.za

Contact **Virtual Office**

086 1732589

Loft Office 6
 The Woodmill Lifestyle Centre
 Vredenburg Road
 Devonvallei
 Stellenbosch
 7600



Web Ref RL16213



R37,000,000

 10  9  8

Monthly Bond Repayment R381,909.71
 Calculated over 20 years at 11% with no deposit.

Transfer Costs R4,482,371.00 **Bond Costs** R132,285.00
 These calculations are only a guide. Please ask your conveyancer for exact calculations.

Monthly Rates R1,416

Prestigious Multi-Residence with exceptional amenities and Development potential

Nestled on an expansive and versatile 4,3996 Ha plot presents a rare opportunity to own a multi-functional property with two fully equipped residences and a flatlet, eight garages, and a range of additional structures, all surrounded by landscaped gardens and tranquil views toward Olympus.

With both homes showcasing unique architectural elements, extensive indoor and outdoor living spaces, this property is perfect for extended families, dual living arrangements, or future development.

Other Additional buildings on the plot are:

Plot has been approved to be developed for 351 units

Main House is +1000sqm: 6 Bedrooms, 5 bathrooms, Foyer, Study, Lounges with fireplaces, Dining room, Kitchen with Scullery, Bar and Entertainment room with indoor Squash court. Large open plan office with kitchenette.

Second House is +230: 2...

Features

Pets Allowed	Yes		
Interior		Exterior	Sizes
Bedrooms	10	Garages	8
Bathrooms	9	Carports / Parkings	8
Kitchens	3	Security	No
Recep. Rooms	10	Dom. Accom.	1
Studies	2	Pool	Yes
Furnished	No	Views	False
		Land Size	4Ha

