

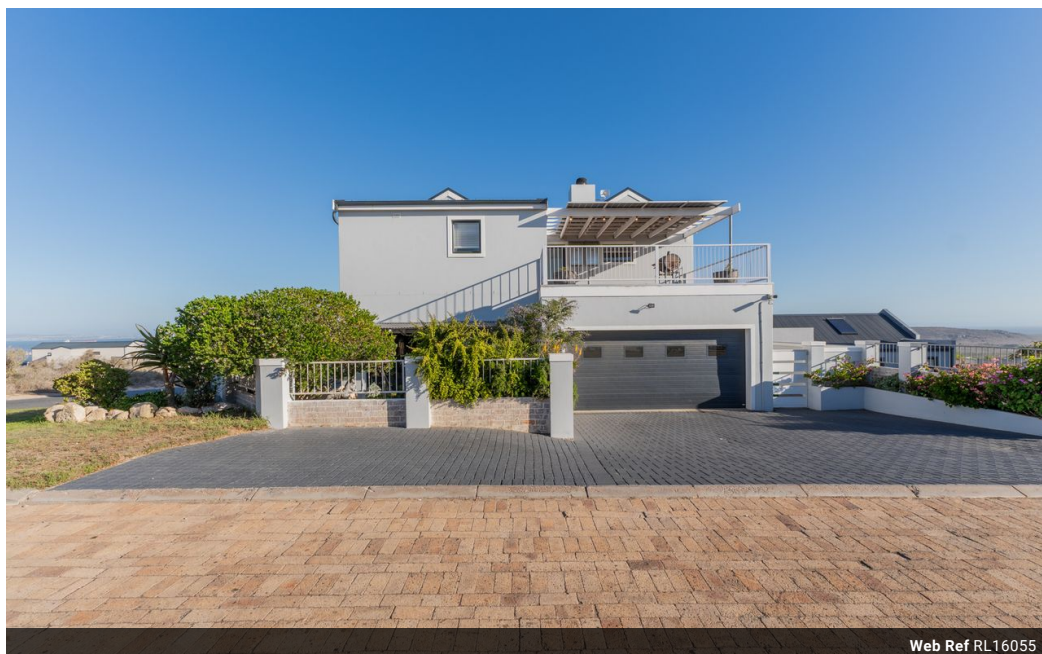


Soma Holloway-Carther  
076 191 0363  
soma@meridianrealty.co.za

Contact **Virtual Office**

086 1732589

Loft Office 6  
The Woodmill Lifestyle Centre  
Vredenburg Road  
Devonvallei  
Stellenbosch  
7600



Web Ref RL16055



R3,199,000

6 5 2

**Monthly Bond Repayment** R32,477.17

Calculated over 20 years at 10.75% with no deposit.

**Transfer Costs** R184,269.00 **Bond Costs** R44,070.00

These calculations are only a guide. Please ask your conveyancer for exact calculations.

**Monthly Levy** R550 **Monthly Rates** R1,500

## Contemporary Three-Part Home with Panoramic Ocean and Harbour Views

Experience elevated coastal living in this beautifully designed modern home, perfectly positioned to capture sweeping 180° views of Saldanha Bay Harbour and the Atlantic Ocean. Divided into three private living spaces, this property offers unmatched flexibility –ideal for extended family living or generating rental income.

### Main Residence

**Open-Plan Design:** The heart of the home features a spacious kitchen fitted with both gas and induction cooktops, seamlessly flowing into the dining and living areas. A dedicated braai room with spectacular ocean views adds the perfect entertainment touch.

**Generous Patio:** A large front patio extends the living area outdoors ideal for relaxing or entertaining with the sea as your backdrop.

### Bedrooms:

The main bedroom boasts breathtaking views, which can be enjoyed from both the room and its...

## Features

<b>Pets Allowed</b>	Yes				
<b>Interior</b>		<b>Exterior</b>		<b>Sizes</b>	
Bedrooms	6	Garages	2	Floor Size	350m²
Bathrooms	5	Carports / Parkings	5	Land Size	580m²
Kitchens	3	Security	No		
Recep. Rooms	6	Pool	No		
Furnished	No	Views	True		