

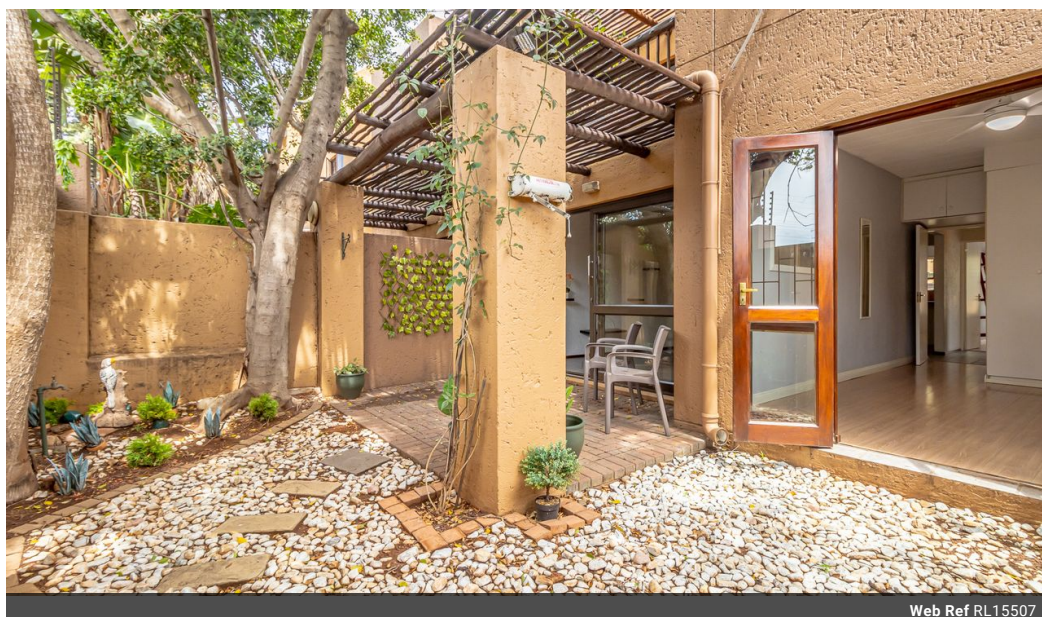


Kristy Strydom
083 541 2220
kristy@meridianrealty.co.za

Contact **Virtual Office**

086 1732589


Loft Office 6
The Woodmill Lifestyle Centre
Vredenburg Road
Devonvallei
Stellenbosch
7600



Web Ref RL15507



R1,100,000

 2  2

Monthly Bond Repayment R11,354.07

Calculated over 20 years at 11% with no deposit.

Transfer Costs R32,749.00 **Bond Costs** R25,220.00

These calculations are only a guide. Please ask your conveyancer for exact calculations.

Monthly Levy R2,664 **Monthly Rates** R2,026

Fabulous Two-Bedroom Garden-Unit

This beautiful, expansive ground-floor garden unit offers 2 bedrooms and two bathrooms in the highly desirable Chobe Sands security estate in Douglasdale. A spacious tiled open-plan design seamlessly connects the dining area, lounge, and kitchen. Sliding aluminium doors lead to a private garden, also accessible via elegant French doors from the en-suite main bedroom. This generously sized bedroom features laminate flooring, a tiled bath/shower, and ample storage. The second bedroom, equally stylish, boasts laminate flooring, a decorative bookshelf, white blinds, and plentiful cupboard space. Adjacent is a well-appointed bathroom with a corner shower.

The functional kitchen includes a 4-plate glass stove, oven, extractor fan, and room for a washing machine. Newly installed remote-controlled ceiling fans in the lounge and...

Features

Pets Allowed	Yes				
Interior		Exterior		Sizes	
Bedrooms	2	Carports / Parkings	1	Floor Size	89m ²
Bathrooms	2	Security	Yes	Land Size	11,253m ²
Kitchens	1	Pool	Yes		
Recep. Rooms	2	Views	False		
Furnished	No				