

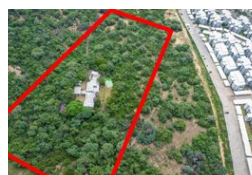


**Rose Tarr**  
0795706014  
rose@meridianrealty.co.za

Contact **Virtual Office**

086 1732589

Loft Office 6  
The Woodmill Lifestyle Centre  
Vredenburg Road  
Devonvallei  
Stellenbosch  
7600



**R16,000,000**

**Monthly Bond Repayment** R162,436.63

Calculated over 20 years at 10.75% with no deposit.

**Transfer Costs** R1,730,521.00 **Bond Costs** R113,285.00

These calculations are only a guide. Please ask your conveyancer for exact calculations.

## Promising Development Site

Located on Holkham Road. One of the last notable pieces of land available for development in Paulshof. Measuring 3.7241 ha that offers considerable potential for various projects. The area is already developed, surrounded with residential complexes and amenities. The positioning of this plot stands out due to its size, its unique benefits enhanced by the slight elevation allowing for amazing views, making it a rare opportunity for development.

With easy access to major roads, connecting nearby neighbourhoods. Fourways, Sunninghill and Sandton are all within proximity, offering essential amenities like public transport, Schools, hospitals, and a huge selection of shopping destinations.

Paulshof is an ideal blend of convenience and natural beauty that makes it so attractive for developers seeking a new opportunity within a...

## Features

