

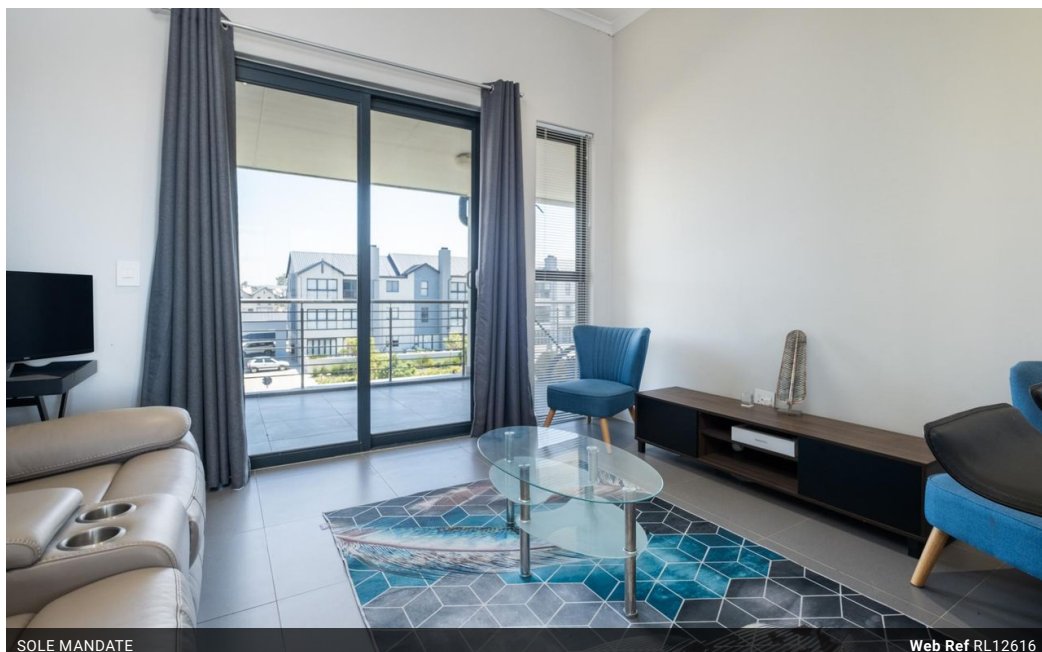


**Chris Clark**  
0833915639  
chris.clark@meridianrealty.co.za

Contact **Virtual Office**

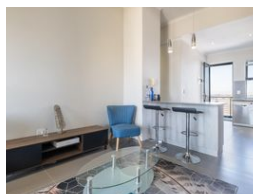
086 1732589

Loft Office 6  
The Woodmill Lifestyle Centre  
Vredenburg Road  
Devonvallei  
Stellenbosch  
7600




SOLE MANDATE

Web Ref RL12616



**R1,695,000**

 2  2

**Monthly Bond Repayment** R17,208.13

Calculated over 20 years at 10.75% with no deposit.

**Transfer Costs** R54,739.00 **Bond Costs** R30,875.00

These calculations are only a guide. Please ask your conveyancer for exact calculations.

**Monthly Levy** R2,144 **Monthly Rates** R685

## Stylish two bedroom investment opportunity within Sitari Country Estate!

This well located second floor two bedroom apartment is currently under lease until December 2023. The unit is partly furnished and will be sold including the furniture currently in place. Grand Olive is one of the initial developments within Sitari Country Estate, this comfortable and spacious apartment has double volume ceiling height throughout. The apartment layout is open plan, kitchen has a breakfast nook for seating and connects with the lounge and patio outside with a large built in braai. Both bedrooms are spacious and have built in cupboards with the main bedroom being en-suite. The apartment has one allocated parking and is fibre ready.

Sitari Country Estate offers a Lifestyle Centre with Fitness center (gym) for residents and a Merkava Coffee Shop, scenic 14km cycle and running route within the estate. Security...

## Features

**Pets Allowed** Yes

### Interior

Bedrooms	2
Bathrooms	2
Kitchens	1
Recep. Rooms	2

### Exterior

Carports / Parkings	1
Security	Yes
Pool	No
Views	Yes

### Sizes

Floor Size	82m²
------------	------

