



Melanie Van Der Westhuizen
0621641238
melanie@meridianrealty.co.za

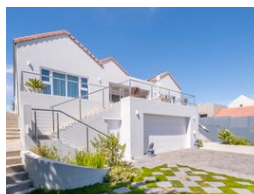
Contact **Virtual Office**

086 1732589

Loft Office 6
The Woodmill Lifestyle Centre
Vredenburg Road
Devonvallei
Stellenbosch
7600



Web Ref RL14225



R4,995,000

4 Bedrooms 4 Bathrooms 2 Carports / Parkings

Monthly Bond Repayment R50,710.69

Calculated over 20 years at 10.75% with no deposit.

Transfer Costs R401,795.00 **Bond Costs** R61,035.00

These calculations are only a guide. Please ask your conveyancer for exact calculations.

Monthly Rates R1,878

Your Dream Home Awaits: 4-Bedroom Oasis

The Chartwell House, nestled in the serene coastal enclave of Port Owen on the West Coast of South Africa, is an exceptional property. It seamlessly marries elegance, functionality, and comfort, creating a true real estate gem. This wheelchair-friendly home invites you to embrace coastal living at its finest, combining design, comfort, and natural splendour. As you step through the grand entrance onto the covered veranda, breathtaking vistas of the surrounding landscape unfold. The open-concept layout harmoniously flows from room to room, maximizing natural light. The living room, dining area, and family room strategically position large windows and sliding doors to seamlessly connect indoors with outdoors, creating an inviting canvas for entertaining.

Elevated ceilings throughout the house create an airy ambiance. The living...

Features

Pets Allowed Yes

Interior

Bedrooms	4
Bathrooms	4
Kitchens	1
Recep. Rooms	2
Studies	1
Furnished	No

Exterior

Garages	2
Carports / Parkings	2
Security	Yes
Pool	No
Views	False

Sizes

Floor Size	207m ²
Land Size	618m ²