



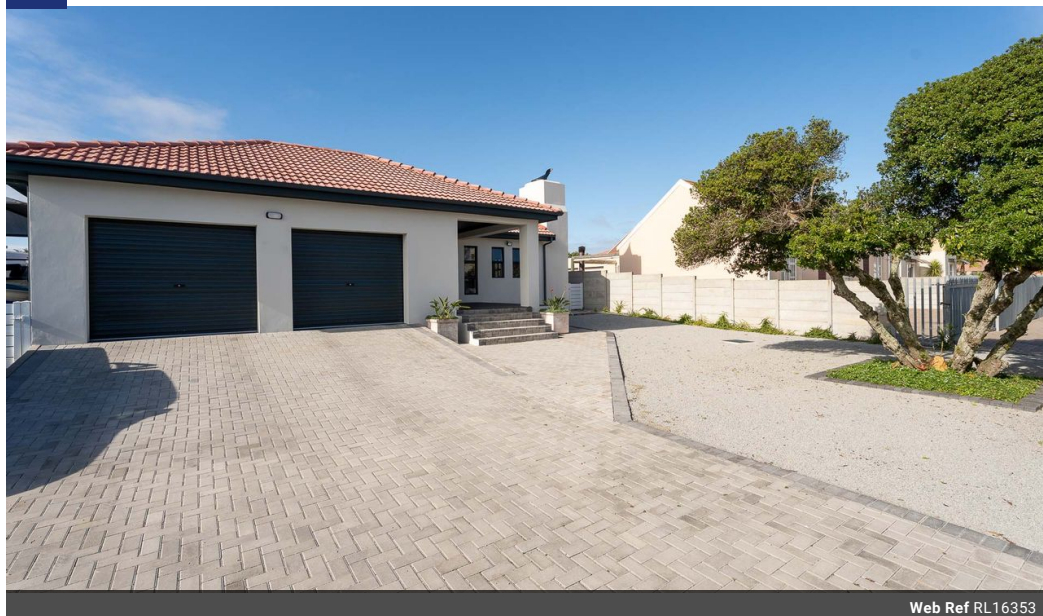
Melanie Van Der Westhuizen
0621641238
melanie@meridianrealty.co.za

Contact **Virtual Office**

086 1732589

Loft Office 6
The Woodmill Lifestyle Centre
Vredenburg Road
Devonvallei
Stellenbosch
7600

NEW



Web Ref RL16353



R3,245,000

3 2 2

Monthly Bond Repayment R32,944.18

Calculated over 20 years at 10.75% with no deposit.

Transfer Costs R191,497.00 **Bond Costs** R45,955.00

These calculations are only a guide. Please ask your conveyancer for exact calculations.

Monthly Rates R1,300

Contemporary 3-Bedroom Gem Near Port Owen Marina

Envision a life of refined coastal leisure, mere moments from the vibrant activity of the Port Owen waterway. This exceptional three-bedroom dwelling offers an unparalleled fusion of upscale comfort and prime positioning, ideal for individuals captivated by aquatic adventures and the peaceful embrace of seaside existence in beautiful Port Owen. Enter a domain where expansive design and sophisticated appointments define every space. This residence is more than just a house; it's your exclusive retreat for sophisticated entertaining and tranquil repose.

DISTINCTIVE ATTRIBUTES FOR AN ELEVATED LIFESTYLE:

Fluid & Sociable Interiors: Enjoy the beautifully connected main living areas, where the reception space and dining hub flow together to create a bright, welcoming atmosphere –perfect for cherished family moments or stylish...

Features

Pets Allowed Yes

Interior

| | |
|--------------|----|
| Bedrooms | 3 |
| Bathrooms | 2 |
| Kitchens | 1 |
| Recep. Rooms | 2 |
| Furnished | No |

Exterior

| | |
|---------------------|-------|
| Garages | 2 |
| Carports / Parkings | 2 |
| Security | No |
| Pool | No |
| Views | False |

Sizes

| | |
|------------|-------------------|
| Floor Size | 239m ² |
| Land Size | 600m ² |

